

Ambulance Oxygen Delivery System for 1 Cylinder

The Ambulance Oxygen Delivery system is a vital component for emergency medical services, enabling a continuous flow of oxygen to patients in need during transport to medical facilities. A complete compact and tidy system providing medical staff with free working space.

Delivery System for 1 cylinder

The system comes equipped with oxygen gas outlets and a touchscreen control alarm panel. The oxygen outlets enable easy and safe connection to the system, and ensure a constant and reliable oxygen flow for the patient while the control alarm panel monitors the gas pressure in the cylinder and shows/alerts the medical staff in case of a pressure drop.



Highlights

- **Medical Gas outlets type:**
Sil-Ohio, ENV 737-6, Puritan Bennett type, DIN, British standard, DISS*.
- **Control Alarm panel monitor highlights:**
 - Presenting actual time left for treatment (in minutes) based on preset flow rate parameters.
 - 10.1" full HD LCD touchscreen - graphically and digitally displaying the cylinder gas pressure and output pressure, alerting in case of a pressure drop.
 - Graphically & digitally display of the actual status of the source - "In use" or "Empty".
 - Periodical maintenance alert.
 - Gas expiration date alert - an alert for the medical gas cylinder expiration date.
 - Log History File - Event logging, recording all alarms and panel activities.
 - Customizable text & language.
- Advanced Communication: TCP/ IP Modbus.
- Automatic adjustment of screen brightness (day & night mode).
- **SMS alert** when oxygen pressure reduces to a pre-set level - **optional**.
- **Web remote view on the Internet** - online view accessible via a web browser. This website allows authorized users to remotely access and view the data in real-time.-**optional**
- **Additional data:** GPS data showing the current location of each ambulance by its number - **optional**
- **4G modem installed** - **optional**

Applicable Standards:

- ISO 10524, EN-1789, NFPA 1917

Silbermann's Quality Management System:

- ISO 9001-2015
- ISO 13485-2016



* Other types of oxygen gas outlets are available according to customers' request.

SILBERMANN Technologies Ltd.

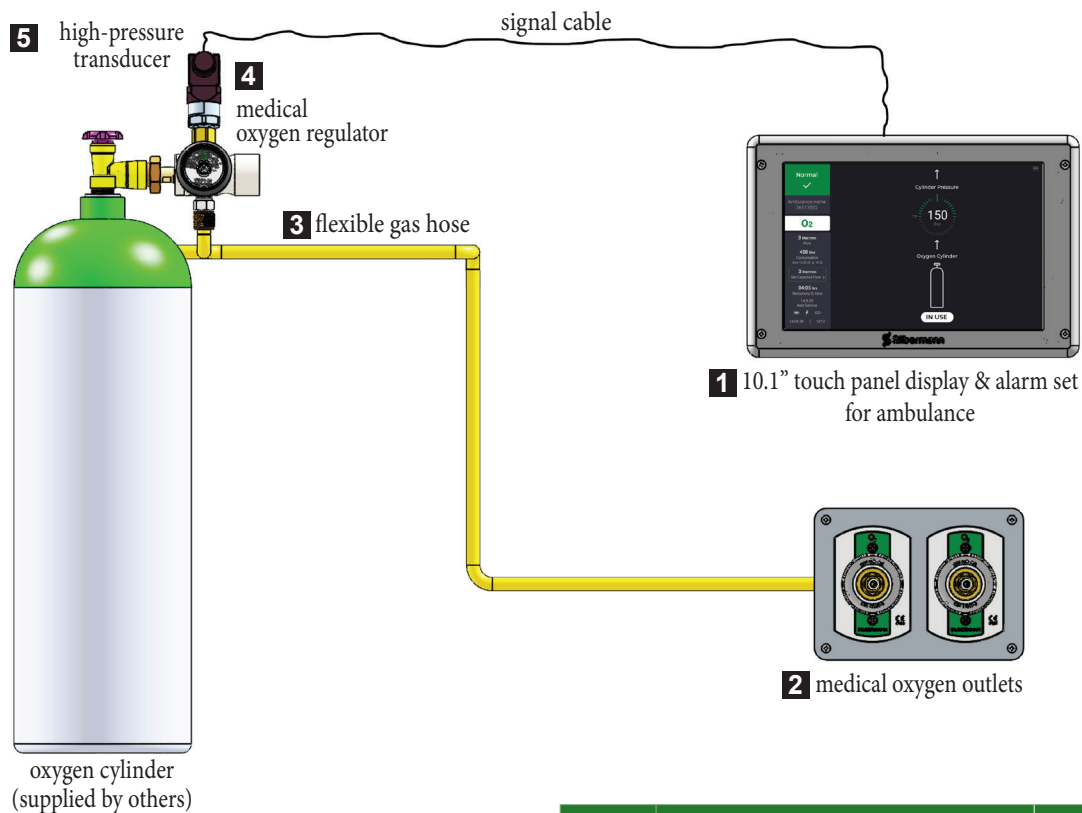
Address: #5 Harakevet st. POB 4605, Petah-Tikva, 4900715, ISRAEL
Tel: +972-3-9309186 | Fax: +972-3-9315721
E-Mail: info@silbermann.com, www.silbermann.com

Ambulance Oxygen Delivery System for 1 Cylinder

Emergency Medical
Services



Diagram



Specifications:

- Gas sensors/Pressure 4-20 mA transmitters.
- Oxygen Pressure Regulators**:
 - Input pressure: up to 200 bar
 - Output pressure: 3.5-4 bar (Regulated pressure)
 - Flow rate capacity of up to 100 liters per minute.
- Flow selector 0-25 lpm
- Power Requirements:
 - Voltage: 12V DC supplied from Ambulance Electrical Supply Power.
 - 5A Slow Blow fuse 5x20mm.

* Other types of oxygen gas outlets and adapters are available according to customers' request.

** Oxygen regulator with CGA 540 connector - optional

Item No.	Item description	Catalog No.
1	10.1" Touch Panel Display & Alarm Set for Ambulance	7182507
2 3	A pair of Sil-Ohio/ENV* oxygen gas outlets with flexible hose	3725200 / 3725300
4	Oxygen regulator with 3/4G connection**	1505400
	Flow selector 0-25 Sil-Ohio	4501121

How to order

- Specify the type and number of medical gas outlets required.
- Indicate the required cylinder connection, otherwise G 3/4 shall be supplied.
- Additional secondary equipment: Flowmeters, Flow selectors, Suction unit... shall be ordered separately.

SILBERMANN Technologies Ltd.

Address: #5 Harakevet st. POB 4605, Petah-Tikva, 4900715, ISRAEL

Tel: +972-3-9309186 | Fax: +972-3-9315721

E-Mail: info@silbermann.com, www.silbermann.com

 **Silbermann**
Medical Gas Systems Since 1950